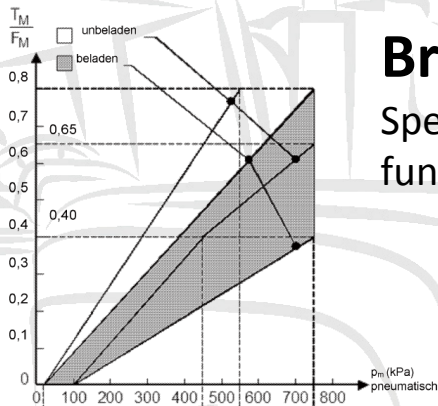


# NEW EU REGULATIONS FOR A&F\*-VEHICLES

No. 167/2013 | 2015/68

FOR NEW EU TYPE- ADMISSION FROM 01.01.2016

## Important Requirements for Air-Brake Systems

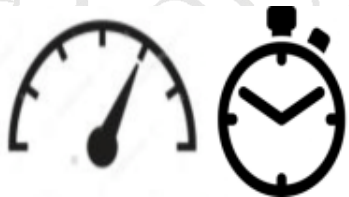


### Brake Band

Specification of bandwidth for pressure rise as a function of deceleration

### Automatic Break-Away Guard

Automatic detection of a broken service brake line



### Response-time Measurement

Limits for the permissible reaction time of pressure build-up in the system

# NEW EU REGULATIONS FOR A&F-VEHICLES

No. 167/2013 | 2015/68

FOR NEW EU TYPE- ADMISSION FROM 01.01.2016



## Important Requirements for Air-Brake Systems

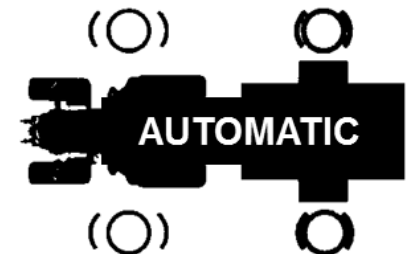


### Test-/ Check position

Releasing the trailer brake to check if the towing vehicle's parking brake can keep the towed equipment in place.

### Automatic Anti-Jackknifing Brake

Independent actuation of the trailer brake system is only allowed automatically, not by command of the driver



# NEW EU REGULATIONS FOR A&F-VEHICLES

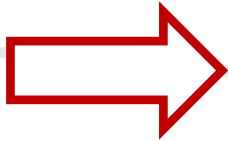
No. 167/2013 | 2015/68

FOR NEW EU TYPE- ADMISSION FROM 01.01.2016

## Important Requirements for Air-Brake Systems



**Ban of the reliable and proven driver  
actuated anti-jackknifing brake**



**Special permissions  
will no longer be granted**



**> 40 km/h**  
**Gradual application of the secondary brake  
(hand brake) to the trailer**

# IMPACTS OF THE REGULATION EU 167/2013



**Additional safety-features**  
such as compliance with the brake band, break-away guard,  
test-/ check position



**Clarification and unification of requirements for brake systems**



**Increased effort for calculation, trial and admission**  
of a new system.

**Compliance with the brake band in every condition and variation?**

# REGUALTION OLD OR NEW ?

e..\*2003/37\* means old

e..\*167/2013\* means new



# IMPACTS OF THE REGULATION EU 167/2013



**Dimensioning according to Brake Band solely applicable to Trailers >30km/h**

**Issues when combining tractors complying to EU 167/2013 with old trailers  $\leq$ 25km/h and new trailers < 30 Km/h are to be expected!**



# REMAINING QUESTIONS

?

No provision for 1-Line trailer brake in the new EU- regulations.

Nationally retrofitting allowed?

If NOT -> Conversion of 1-Line braked trailers required

